

## Color Selection

Colors shown may vary from actual hues and should only be used as a guide. Refer to actual product samples for final color selection. Because concrete products are manufactured with high quality, naturally-mined aggregates and materials, variations in color or shading should be expected in products that are manufactured at different times and in units having different shapes. This color or shading variation is acceptable in the industry. County Materials recommends immediately verifying the product and color upon receipt, and prior to opening pallets. For any discrepancies, contact your local County Materials representative before installation. Use of product constitutes acceptance.

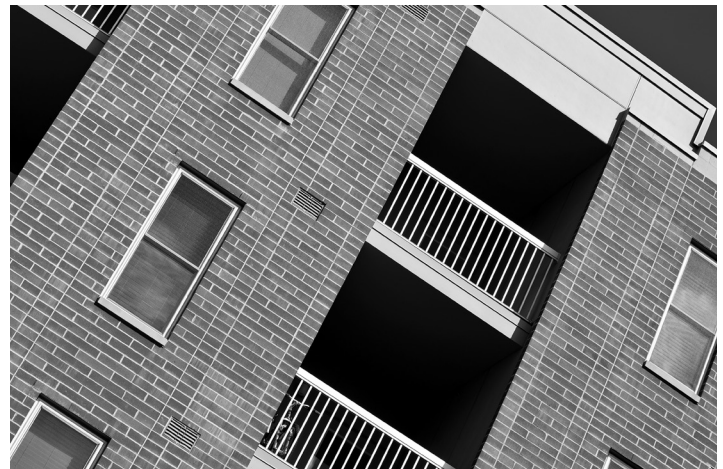
## Mock-up Sample Wall Panel

Before project installation begins, construct a separate (not part of the actual building) mock-up sample wall panel of not less than 4 feet by 4 feet with Heritage Collection Designer Concrete Brick and related Decorative CMUs in the pattern, type, color, finish and shape specified. This sample wall panel must be completed for evaluation of surface preparation techniques, application workmanship, as well as the application methods for any water repellents in mortar, and cleaning and sealing agents.

## Proper Color Distribution and Installation

Color of concrete products may vary significantly between production lots. Install concrete units from several pallets to ensure distribution of color.

The contractor must install concrete units in accordance with the masonry industry's best practices, according to NCMA and MSJC standard specifications, and the manufacturer's instructions. County Materials is not liable or responsible for loss or damage resulting from improper storage, handling, maintaining the products or failure to follow installation instructions. Follow all applicable warnings, advisories, and instructions.



## Efflorescence

Efflorescence is a naturally occurring process in all concrete products which may appear in the form of a white powdery film on the unit's surface. Efflorescence may be more perceivable in darker colors. It does not, in any way, compromise the functionality or the structural integrity of the product or your installation. Although efflorescence cannot be prevented, it will wash off over time or it can be cleaned with an industry cleaner. County Materials accepts no responsibility or liability for the occurrence of efflorescence.

## Water Repellents

Integral water repellents can be added to most CMUs for improved performance both in the product and building structure. Water repellents are one part of a wall system, however, proper design and installation are crucial to ensuring adequate wall system performance. Water repellent options are also available for mortar and are specific to application requirements and desired results. County Materials recommends asking a County Materials representative regarding the use of integral water repellent in CMUs and the complimentary use of integral water repellent in mortar. Use of the water repellent in mortar must comply with all instructions provided by the water repellent manufacturer, and the water repellent method in mortar must be performed on a separate mock-up sample wall panel not less than 4 feet by 4 feet

(Continued on page 2)

(Continued from page 1)

prior to Buyer approval. County Materials accepts no responsibility or liability for the use of water repellents in mortar used with our concrete masonry products.

### Cleaning Agents

Always keep units clean during construction. Harsh cleaning methods after units have been installed might mar the surface of units.

Concrete cleaning agents are not required but are an option for all County Materials concrete masonry units. There are many different cleaning agents specific to application requirements and desired results. Cleaning agent manufacturers recommended are PROSOCO, and EaCo Chem Inc. Use of the cleaning agent must comply with all instructions provided by the cleaning agent manufacturer, and the cleaning agent method must be performed on a separate mock-up sample wall panel not less than 4 feet by 4 feet prior to Buyer approval. County Materials accepts no responsibility or liability for the use of cleaning agents on our concrete masonry products.

### Sealers

A concrete sealer application may not be required on County Materials' concrete masonry products but is an option.

There are many different sealing agents specific to application requirements and desired results. Use of the sealing agent must comply with all instructions provided by the sealing agent manufacturer, and the sealing agent method must be performed on a separate mock-up sample wall panel not less than 4 feet by 4 feet prior to Buyer approval. Sealing agent manufacturers recommended are TK Products Construction Coatings, and PROSOCO. County Materials accepts no responsibility or liability for the use of sealers on our Heritage Collection Designer Concrete Brick.

### Construction Residue

A possible by-product of cutting concrete units during installation with a saw is residue-filled water or concrete dust. Residue-filled water or re-hydrated dust can cling to the surface of units and leave a concrete stain. It is recommended to wash and remove the water or concrete dust from the surface of concrete masonry units before it dries. Construction residue can also happen through soil disturbance or environmental elements. These contaminants should be removed immediately; they do not compromise the functionality or the structural integrity of the product or your installation. County Materials accepts no responsibility or liability for the occurrence of construction residue or concrete stains.