

CASE STUDY



PROJECT DETAILS

Project Name:

County Highway V Bridge

Location:

Augusta, Wisconsin

Products Used:

Prestressed Bridge Girders

Contractor:

Lunda Construction

Engineer:

Wisconsin Department of Transportation

Product Manufacturer:

County Materials Corporation

County Materials' Prestressed Bridge Girders Span Scenic Creek

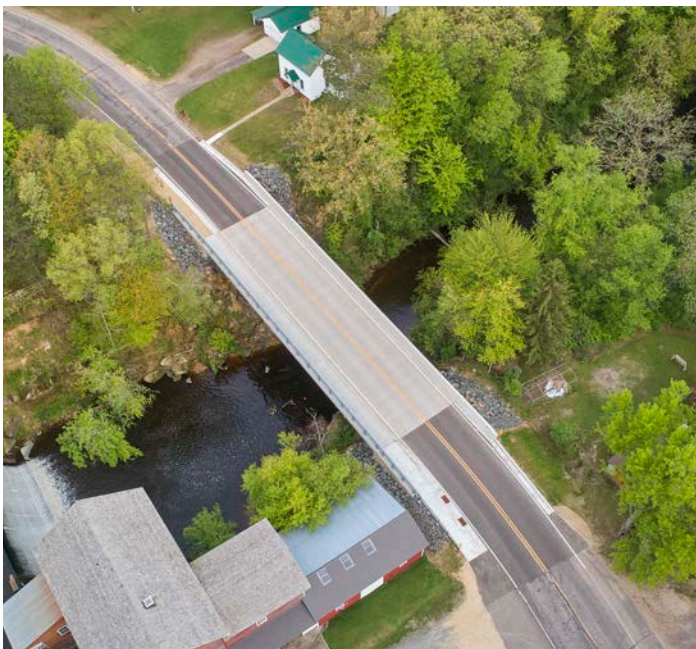
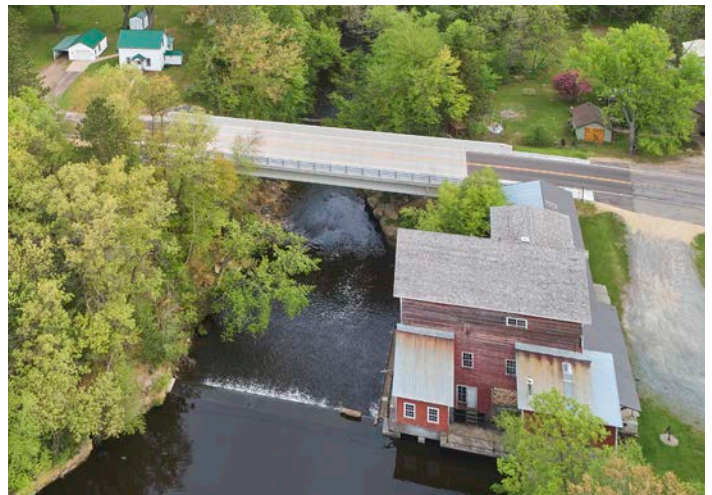
Solutions: County Materials delivers prestressed bridge girders to a challenging site in rural Wisconsin

County Materials' delivery of four, 121-foot prestressed bridge girders for an Eau Claire County project relied on skilled truck drivers to reach a site in rural Wisconsin. The Wisconsin Department of Transportation and Lunda Construction selected County Materials for the project, relying on the company to manufacture and deliver durable prestressed bridge girders that meet exacting specifications.

County Highway V crosses Bridge Creek at a scenic spot just below a dam with a working stone water wheel. Limited accessibility required County Materials' drivers to back a half mile to the site before the girders were transferred to a beam launcher and backed up until they could be set in place. County Materials' experienced dispatch and fleet team coordinates precise delivery schedules and overcomes site challenges to minimize transportation disruptions.

Use County Materials' Prestressed Bridge Girders for your next project by contacting our Customer Service Team at (800) 242-7733.





//

County Materials' experienced dispatch and fleet team coordinates precise delivery schedules and overcomes site challenges to minimize transportation disruptions.

//